



Q-Swab™ Sample Collection & Delivery Device

Product No. QS1000 (Buffered Peptone Water, 250 devices)

Product No. QS1200-100 (Lethen Broth, 100 devices)

Introduction

Description and Intended Use

Hygiena's Q-Swab™ is an all-in-one, medium-containing device for environmental surface samples. Each device is ready to use and can be used in combination with conventional agar plates or sample-ready media systems.

Important Tips and Notes Before Starting the Test

- Allow the Q-Swab device to equilibrate to room temperature (21 to 25 °C) before use.
- Do not touch the swab or the inside of the sample device with your fingers.
- Q-Swab can be used pre-wetted ([Test Procedure A](#)) or dry ([Test Procedure B](#)).

Test Procedure A: Sample Collection with a Pre-wetted Swab

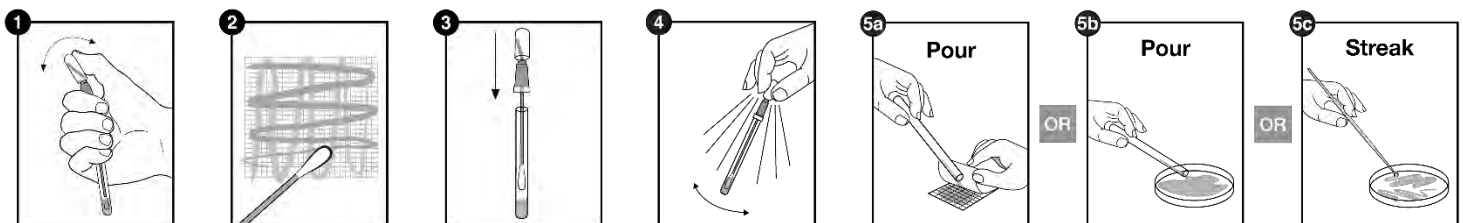
1. Hold the swab tube firmly and use your thumb and forefinger to break the Snap-Valve by bending the bulb forward and backward. Then, squeeze the bulb twice to expel the liquid into the tube, wetting the swab tip.
2. Holding the tube firmly, twist and pull the swab out of the tube and thoroughly swab a standard 10 x 10 cm (4 x 4 inch) area for a typical flat surface.

Important swabbing technique tips:

- For irregular surfaces, ensure the swabbing technique remains consistent for each test and swab a large enough area to collect a representative sample.
 - Swab in a crisscross pattern vertically, horizontally and diagonally in both directions.
 - Rotate the swab while collecting the sample to maximize sample collection on the swab tip.
 - Apply sufficient pressure to create flex in the swab shaft.
3. Place the swab back in the swab tube.

Note: *The Q-Swab may now be delivered to a laboratory for culturing.*

4. Shake the device for 10 seconds to mix the sample.
5. Remove the swab from the tube and culture either by pouring contents onto sample-ready media film or an agar plate or by streaking onto an agar plate.





Test Procedure B: Sample Collection with a Dry Swab

1. Holding the tube firmly, twist and pull the swab out of the tube and thoroughly swab a standard 10 x 10 cm (4 x 4 inch) area for a typical flat surface.

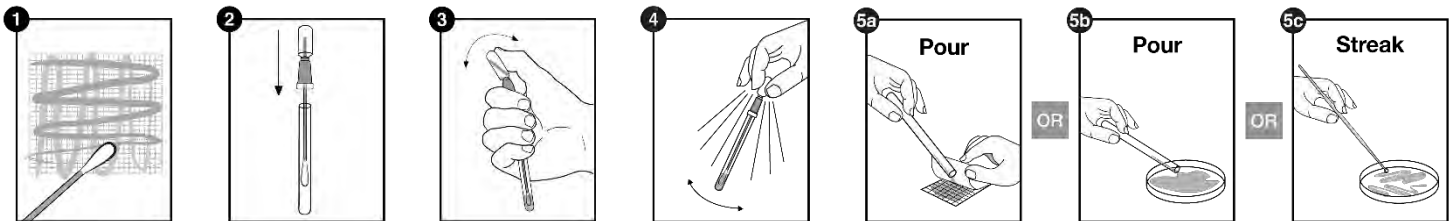
Important swabbing technique tips:

- For irregular surfaces, ensure the swabbing technique remains consistent for each test and swab a large enough area to collect a representative sample.
- Swab in a crisscross pattern vertically, horizontally and diagonally in both directions.
- Rotate the swab while collecting the sample to maximize sample collection on the swab tip.
- Apply sufficient pressure to create flex in the swab shaft.

2. Place the swab back in the swab tube.
3. Hold the swab tube firmly and use your thumb and forefinger to break the Snap-Valve by bending the bulb forward and backward. Then, squeeze the bulb twice to expel the liquid into the tube.

Note: *The Q-Swab may now be delivered to a laboratory for culturing.*

4. Shake the device for 10 seconds to mix the sample.
5. Remove the swab from the tube and culture either by pouring contents onto sample-ready media film or an agar plate or by streaking onto an agar plate.



Additional Information

Storage and Shelf Life

- Store Q-Swab with Buffered Peptone Water (QS1000) at 2 to 8 °C (36 to 46 °F).
- Store Q-Swab with Letheen Broth (QS1200-100) at 2 to 25 °C (36 to 77 °F).
- Do not use past the expiration date on the label.

Disposal

Used devices that confirm positive culture results may be a biohazard and should be disposed of safely in compliance with Good Laboratory Practice and Health and Safety regulations. Disinfect before disposal. Q-Swab devices can be disinfected by autoclaving or by soaking unsealed devices in 20% bleach for 1 hour.



Safety and Precautions

- Components of Q-Swab devices do not pose any health risk when used in accordance with standard laboratory practices and procedures of this insert.
- Q-Swab devices are for one-time use. Do not reuse.
- Sampling should be done aseptically to avoid cross-contamination.
- For further safety instructions, refer to the Safety Data Sheet (SDS).

Hygiena Liability

As with any culture medium-based test, Q-Swab results do not constitute a guarantee of quality of food, beverage products or processes that are tested with these devices. Hygiena will not be liable to the user or others for any loss or damage, whether direct or indirect, incidental or consequential from use of these devices. If this product is proven to be defective, Hygiena's sole obligation will be to replace the product or at its discretion, refund the purchase price. Promptly notify Hygiena within 5 days of discovery of any suspected defect and return the product to Hygiena. Please contact Customer Service for a Returned Goods Authorization Number.

Contact Information

For more information, visit www.fmcgis.com.au



FMCG Industry Solutions Pty Ltd

ABN 22 135 446 007

Factory 11A, 1 - 3 Endeavour Rd, Caringbah NSW 2229

www.fmcgis.com.au

sales@fmcgis.com.au

1300 628 104 or 02 9540 2288